



# LOADING DOCK BUMPER



Data Sheet

## FEATURES:

- Designed to cushion vehicle impacts
- Rectangular industrial bumper
- Heavy-duty rubber construction
- UV resistant and corrosion-proof
- Suitable for warehouses, factories, depots, supermarkets and car parks
- Constructed of 100% recycled rubber
- Prevents structural damage



[www.VigilProducts.com](http://www.VigilProducts.com)

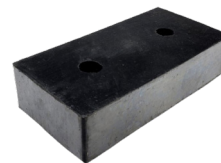
Unit 11C, Claremont Way, Lakesview Industrial Park, Canterbury CT3 4BF

# LOADING DOCK BUMPER

Loading dock bumpers are designed to cushion vehicle impacts caused by large vehicles picking up or dropping off shipments to your premises. You'll often find these installed at warehouses, factories, depots, supermarkets and even car parks, with a durable design that cushions and absorbs impacts.

Helping to protect the vehicle, driver, and the loading bay in the event of an accident when fixed to the wall, the hard-wearing rubber bumper can be used individually or installed at intervals along the wall. Supplied with pre-drilled countersunk fixing holes designed for M16 bolts (not included), these are manufactured of heavy-duty, 100% recycled rubber which is UV resistant and corrosion-proof.

Manufactured for Vigil Products, the black loading dock bumper prevents serious accidents that could damage vehicles and buildings as well as injuring people and damaging shipments. The loading dock buffer also acts as a guide for lorry drivers backing up into a space so they can feel when they can go no further, without causing any harm.



Product	Loading Dock Bumper
Product Code	VP-DB400
H x W x D	20x130x1050mm
Weight	0.68kg
Colour	Black
Material	100% recycled rubber
Carton Quantity	20
Carton Weight	14.44kg
Carton Dimensions	210x270x1070mm



[www.VigilProducts.com](http://www.VigilProducts.com)

Unit 11C, Claremont Way, Lakesview Industrial Park, Canterbury CT3 4BF