

## Rack and pinion closer with link arm L190

Rack and pinion door closer with link arm

## Product description

- Certified in compliance with EN 1154, size 3-6
- Rack and pinion closer with link arm L190
- Suitable for fire and smoke protection doors
- For single action doors up to 1400 mm wide

## Overview of Advantages

- Can be used with concealed mounting plate, suitable for fire and smoke protection doors
- Can be used for left and right-handed doors
- Axis height adjustable up to 14 mm
- Closing speed, latching speed and backcheck adjustable via front facing regulating valves
- Thermodynamic valves for consistent performance
- Variable adjustable closing force
- Opening angle up to 180°
- Effective backcheck and latching speed range adjustable
- Accessories for established installation types
- Large range of applications
- Standard colours: silver EV1; white, similar to RAL9016; brown, similar to RAL8014; black, similar to RAL9005
- Customised finishes available on request

## Characteristics for hold open link arm L191

- Hold-open angle adjustable up to 150°
- Hold-open mode can be enabled and disabled as required
- Same installation as link arm
- Cannot be used with fire and smoke protection doors

## Characteristics of special model DC300DA

- Delayed closing variable from max. opening angle - 70°, adjustable from front
- Other features as in Model DC300

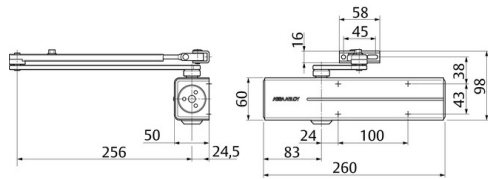
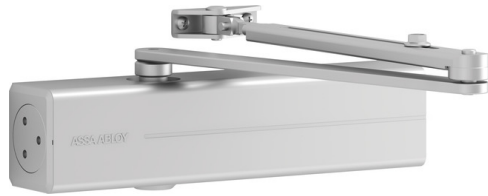
[view construction details](#)

## The advantages at a glance

Customer segment	Advantages
Project planners	Extensive range of uses: Fire and smoke protection doors as well as standard doors Modern design Compact design Fulfils barrier-free building requirements Same dimensions and design with and without mounting plate Comprehensive functions, standard and optional
Builders	One drilling template overall Adjustable to nearly all door and frame types Quick and easy installation Quickly and easily adjustable Suitable for left and right handed doors, in both door and frame mounted applications
Trade	Reduced inventory costs due to modular product range One single product suitable for a large variety of mounting positions Complementary accessories available for the whole product range
User	Largely unaffected by temperature fluctuations because of thermodynamic valves Easier door opening and improved accessibility due to reapidly decreasing torque Backcheck feature offers optimum protection for doors and walls

## Technical data

Closing force	EN 3-6
Door width up to	1400 mm
Suitable for fire doors	Yes
DIN direction	Left / right handed
Closing speed	Variable between 180°-15°
Latching speed	Variable between 15°-0°
Backcheck effect	Variable above 75°
Delayed closing	No



Dimensional drawings



Hold-open mode (with hold-open Adjustable 75°-150°, can be enabled and disabled link arm L191)

CE marking for building products	Yes
Certified in compliance with	EN 1154
Length	260 mm
Height	60 mm
Depth	50 mm
Weight	1.9 kg

### Variants that can be ordered

Order number	Description
DC300-----DEV1-	EN size 3-6, silver EV1
DC300-----D9016	EN size 3-6, white, similar to RAL9016
DC300-----D8014	EN size 3-6, brown, similar to RAL8014
DC300-----D9005	EN size 3-6, black, similar to RAL9005
DC300-----DXXXX	EN size 3-6, customised finish
DC310-----DEV1-	with delay action, size 3-6, silver EV1
DC310-----D9016	with delay action, size 3-6, silver EV1
DC310-----D8014	with delay action, size 3-6, silver EV1
DC310-----D9005	with delay action, size 3-6, silver EV1
DC310-----DXXXX	with delay action, size 3-6, silver EV1

### Accessories/Individual parts

Order number	Product
DCL190-----EV1-	Link arm L190Silver EV1
DCL190-----9016	Link arm L190White, similar to RAL9016
DCL190-----8014	Link arm L190Brown, similar to RAL8014
DCL190-----9005	Link arm L190Black, similar to RAL9005
DCL190-----XXXX	Link arm L190Customised finish
DCL191-----EV1-	Hold-open link arm L191Silver EV1
DCL191-----9016	Hold-open link arm L191White, similar to RAL9016
DCL191-----8014	Hold-open link arm L191Brown, similar to RAL8014
DCL191-----9005	Hold-open link arm L191Black, similar to RAL9005
DCL191-----XXXX	Hold-open link arm L191Customised finish
DCA120-----40	Mounting plate A120For Door Closer Models DC200/DC300/DC500/DC700, galvanised
DCA123-----EV1-	Angle bracket A123For Door Closer Model DC300, silver EV1
DCA123-----9016	Angle bracket A123For door closer model DC300, white, similar to RAL9016
DCA123-----8014	Angle bracket A123For Door Closer Model DC300, silver EV1
DCA123-----9005	Angle bracket A123For door closer model DC300, black, similar to RAL9005
DCA123-----XXXX	Angle bracket A123For Door Closer Model DC300, customised finish
DCA165-----EV1-	Glass door shoe A165For DC300, silver EV1
DCA168-----EV1-	Mounting plate A168For link arm, silver EV1
DCA173-----35--	Cover A173Stainless steel