

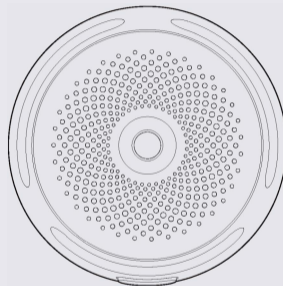


EXCLUSIVELY  
DISTRIBUTED  
IN THE UK BY



Conforms to EN 14604:2005+AC:2008  
X-Sense Innovations Co., Ltd.  
Email: support@x-sense.com

# X-SENSE



## User Manual

Photoelectric Smoke Alarm **XS01**

F.1.05.XS0152

This user manual contains important information regarding the operation of your X-Sense smoke alarm. Ensure you read this user manual fully before installing and operating the alarm. If you are installing this smoke alarm for use by others, you must leave this manual (or a copy of it) with the end user.

## **Introduction**

Thank you for purchasing our smoke alarm. This smoke alarm conforms with the European Standard EN 14604:2005+AC:2008 and is designed to detect smoke. Our product lineups are constantly expanding

### **Visual and Audible Alerts**

During an emergency, the unit will alarm at 85 dB within a distance of 3 m (10 ft) and a red LED indicator will flash in sync with the alarm tone

### **Battery Operated**

A long-life lithium battery sealed inside the alarm ensures a 10-year lifetime in standby condition

### **Silence Mode**

Silence your smoke alarm by pressing the Test/Silence button when non-emergency smoke (e.g. steam) causes nuisance alarms. The red indicator flashes every 5 seconds to remind you that the smoke alarm has been silenced. Press the Test/Silence button again to exit the silence mode or wait 9 minutes for the alarm to automatically exit the silence mode.

## Low Battery & Malfunction Warning

This alarm provides a full audible-visual warning when the battery is low or if there is any malfunction.

The alarm beeps once and the red LED indicator flashes every 60 seconds when the battery is low.

The alarm beeps twice and the red LED indicator flashes every 40 seconds when the alarm is in malfunction.

## Package Contents



1 x Alarm Unit



1 x Mounting Bracket



2 x Screws



2 x Anchor Plugs



1 x User Manual

## Safety Information

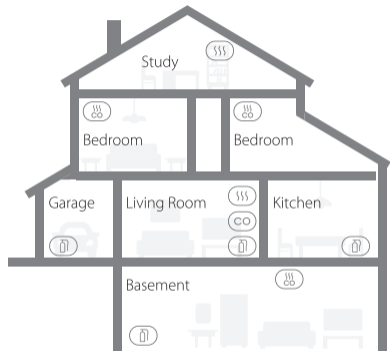
### ⚠ IMPORTANT

1. DANGERS, WARNINGS, AND CAUTIONS ALERT YOU TO IMPORTANT OPERATING INSTRUCTIONS OR TO POTENTIALLY HAZARDOUS SITUATIONS. PAY SPECIAL ATTENTION TO THESE SITUATIONS.
2. THIS ALARM IS NOT INTENDED TO ALERT HEARING IMPAIRED INDIVIDUALS. THE USE OF ALCOHOL OR DRUGS MAY ALSO IMPAIR ONE'S ABILITY TO HEAR THE SMOKE ALARM.
3. FIRES IN CHIMNEYS, WALLS, ROOFS, DIFFERENT LEVELS OR BEHIND CLOSED DOORS MIGHT NOT BE DETECTED.
4. THIS DEVICE DOES **NOT** DETECT FLAMES, HEAT, CARBON MONOXIDE OR OTHER HAZARDOUS GASES.

### ⚠ WARNING

1. NEVER IGNORE ANY ALARM. FAILURE TO RESPOND CAN RESULT IN SERIOUS INJURY OR DEATH.
2. THE SILENCE FEATURE IS ONLY FOR YOUR CONVENIENCE AND WILL NOT CORRECT A PROBLEM. ALWAYS CHECK YOUR HOME FOR A POTENTIAL PROBLEM AFTER ANY ALARM. FAILURE TO DO SO CAN RESULT IN INJURY OR DEATH.
3. TEST THIS SMOKE ALARM ONCE A WEEK. IF THE ALARM EVER FAILS TO TEST CORRECTLY, REPLACE IT IMMEDIATELY! IF THE ALARM CANNOT WORK PROPERLY, IT WILL NOT ALERT YOU TO A PROBLEM.

## Installation Positioning



SSS Smoke Alarms

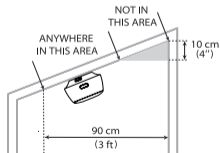
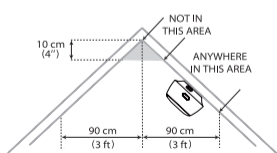
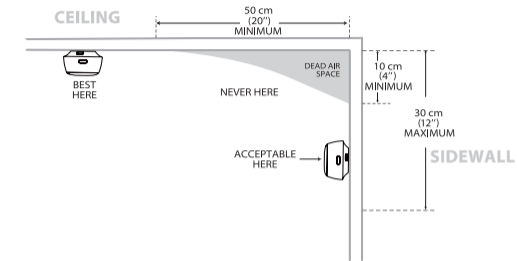
SSS CO Smoke & Carbon Monoxide Alarms

CO Carbon Monoxide Alarms

🔥 Fire Extinguishers

**NOTE:** If a smoke alarm is installed in a kitchen, ensure it has an accessible silence button, and install it as far away from the stove and sink as possible to avoid false alarms.

1. Prioritize the installation of a smoke alarm in the bedroom and hallways, and make sure you can hear the alarm from all sleeping areas. In a home with several bedrooms, install an alarm in every bedroom. If you install only one smoke alarm in your home, install the alarm near to all bedrooms where possible, and not in a basement or furnace room.
2. Install an alarm above the stairway and on every floor of the house.
3. Smoke, heat and anything burning will spread horizontally after rising to the ceiling, so install the alarm in the middle of the ceiling where possible. Ensure that the alarm is installed at the minimum distance away from corner.
4. If an alarm cannot be installed in the middle of a ceiling, install it at a distance of 50 cm (20 in) away from the corners of the room.
5. If an alarm is installed onto a wall, a distance of 10–30 cm (4–12 in) should be kept below the ceiling.
6. If the length of a room or hall is beyond 900 cm (30 ft), several alarms should be installed in the same room.
7. When the wall or ceiling is angled, the alarm needs to be installed within 90 cm (3 ft) of the highest wall or ceiling point (measured horizontally) in the room.

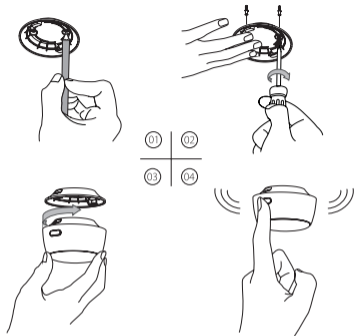


## **⚠ WARNING**

1. THIS ALARM SHOULD BE INSTALLED BY A COMPETENT PERSON.
2. ALARMS SHOULD NOT BE USED AS A SUBSTITUTE FOR PROPER INSTALLATION, USE AND MAINTENANCE OF FUEL BURNING APPLIANCES INCLUDING APPROPRIATE VENTILATION AND EXHAUST SYSTEMS.
3. TO PREVENT INJURY, THIS DEVICE SHOULD BE SECURELY ATTACHED TO THE CEILING OR WALL IN ACCORDANCE WITH THE INSTALLATION INSTRUCTIONS.
4. BATTERIES SHOULD NOT BE EXPOSED TO EXCESSIVE HEAT SUCH AS DIRECT SUNLIGHT, FIRE, ETC.

## **Installation Method**

1. Use the mounting bracket to mark the screw holes on the ceiling or the wall.
2. Drill holes at the 2 marks using an appropriately-sized drill bit. Insert the anchor plugs and screw the mounting bracket using the screws provided.
3. Attach the alarm to the mounting bracket and turn clockwise to lock the alarm.
4. Test the smoke alarm according to the steps in the section below.



## Alarm Test

The alarm must be properly attached to the mounting bracket before it can be tested.

1. Press the test button.
2. The unit beeps 3 times.
3. The red LED will flash 3 times every 4 seconds during the audible signal.
4. After testing, the alarm will automatically enter standby mode.

**NOTE:** The test function accurately tests the alarm's smoke sensing circuit without the need to test with smoke. If your smoke alarm fails to emit an audible test signal, refer to the troubleshooting guide at the end of this manual immediately. Never use an open flame to test this device.

## LED Indicator and Audible Alarm

Status	LED indicator	Audible alarm
Standby Mode	Red LED flashes once every 60 seconds.	None
Test Mode	Red LED flashes 3 times every 4 seconds.	3 short quick beeps
Alarm Mode	Red LED flashes 3 times every 4 seconds.	Short quick beeps
Silence Mode	Red LED flashes once every 5 seconds.	None
Low Battery	Red LED flashes once every 60 seconds.	1 beep every 60 seconds
Malfunction	Red LED flashes twice every 40 seconds.	2 beeps every 40 seconds

## Technical Specifications

Power Supply	10-year sealed lithium battery (non-replaceable)
Sensor Type	Photoelectric
Safety Standard	EN 14604:2005+AC:2008
Coverage Area	20–40 m <sup>2</sup> (215–430 sq. ft)
Operating Temperature	4.4–37.8°C (40–100°F)
Operating Relative Humidity	≤ 85% (non-condensing)
Alarm Loudness	≥ 85 dB at 3 m (10 ft) @ 3.2 ± 0.3 kHz pulsing alarm
Silence Duration	About 9 minutes

### NOTES

1. *Battery life is calculated on the current ratings in the standby mode with weekly testings. If its operation mode changes to an alarming condition, the battery life will be decreased accordingly.*
2. *The smoke alarm functions between 4.4 and 37.8°C (40 and 100°F). Prolonged exposure to temperatures outside of this range can reduce battery life and affect accuracy. We do not recommend operating the device outside of this range.*

## Maintenance

To keep your smoke alarm in good working order, follow these simple steps:

1. Verify the unit's alarm sound and indicator are working properly by testing the unit once a week.

2. As a minimum your smoke alarm should be cleaned once every 3 months:  
Remove the unit from the ceiling and clean the alarm cover and vents with your vacuum cleaner fitted with the soft brush attachment to remove dust and dirt.
3. Never use detergents or other solvents to clean the unit.
4. Avoid spraying air fresheners, hair spray or other aerosols near the alarm.
5. Do not paint the unit. Paint will seal the vents and interfere with the sensor's ability to detect fire.
6. Never attempt to disassemble the unit or clean inside. Doing so will void your warranty.
7. When removed, place the smoke alarm back in its proper location as soon as possible, to assure continuous protection from fire.
8. When household cleaning supplies or similar contaminants are used, the area should be ventilated.

## Troubleshooting

PROBLEM	SOLUTION
Your smoke alarm does not sound during testing.	<ul style="list-style-type: none"><li>• Please check whether the alarm is properly attached to the mounting bracket.</li><li>• Make sure you push the test button firmly.</li></ul>
False alarms triggered intermittently or when residents are cooking, taking showers, etc.	<ul style="list-style-type: none"><li>• Check the location of your smoke alarm (see "Installation Positioning").</li><li>• Clean the smoke alarm (see "Maintenance").</li></ul>

Red LED flashes and the alarm sounds 1 beep every 60 seconds.	The battery is low. Replace the device immediately, as the battery is sealed inside the device and can't be replaced.
Red LED Flashes and the alarm sounds 2 beeps every 40 seconds.	The alarm is malfunctioning. Please clean your smoke alarm and see if it is working normally. If not replace the device immediately.

## Environmental Protection

Waste electrical products should not be disposed of with household waste. Please recycle where facilities exist. Check with Local Authority or retailer for recycling advice



## Manufacturer and Service Information

X-Sense Innovations Co., Ltd

Email: [support@x-sense.com](mailto:support@x-sense.com)

Address: B4-503, Kexing Science Park, 15 Keyuan Road, Shenzhen, 518057, CHINA